



Your Future in Nursing



JOHNS HOPKINS
SCHOOL *of* NURSING

Where Can Nursing Lead You

Bedside Nursing

- BSN or MSN Entry

Healthcare Leadership

- MSN Healthcare Organizational Leadership

Advance Practice Provider (NP, CNS or CRNA)

- MSN or DNP

Nurse Scientist

- Ph.D.

Nurse Educator or Health Policy Leader

- Ph.D. or DNP



Johns Hopkins at a Glance

Location: Baltimore, Maryland

Established: 1916

Student Enrollment: 1200 Students

Mission:

To improve the health of individuals and diverse communities locally and globally through leadership and excellence in nursing education, research, practice, and service.

Values:

The JHSON is a community committed to sharing values of diversity and inclusion in order to achieve and sustain excellence.



Johns Hopkins at a Glance

School of Nursing Highlights:

- Strong commitment to vulnerable populations and social justice.
- Faculty that have shaped and continue to impact the healthcare arena through thriving research programs that are integrated with clinical expertise.
- Great collaboration opportunities with JHSOM & JHSPH through interprofessional education.
- Access to resources throughout the Hopkins system.
- Small school feel with access to large university resources.
- World renowned brand with a reputation for shaping leaders and advancing nursing research.
- Strong alumni population around the world.



Johns Hopkins at a Glance

MSN Entry into Nursing Deadlines:

- Fall: November 1 (Early) and January 15 (Priority)
- Spring: July 1 (Early) and October 1 (Priority)

Program Highlights:

- Strong commitment to vulnerable populations and social justice while increasing health equity.
- Prepared to identify health inequities and vocalize change for patient safety.
- Concepts are taught at the master's level.
- Exposure to nursing leadership.
- Experience in research to prepare you for a future career as a leader or advanced practice nurse.
- Commitment to inter-professional collaboration.



First Semester (17 Credits)

- Professionalism for Nursing in Health Care (3)
- Foundations of Nursing Practice (3)
- **Integrated Clinical Management: Common Health Alterations** (4)
- Health Assessment I (3)
- Pathophysiology I (3)
- Community Outreach to Underserved Communities in Urban Baltimore (1)

Second Semester (15 Credits)

- **Integrated Clinical Management: Chronic Health Alterations** (4)
- Pharmacology (3)
- **Biostatistics for Evidence-Based Practice** (3)
- Promoting Health in Older Adults (3)
- **Health Promotion and Risk Reduction Across the Lifespan** (2)*

Third Semester (13 Credits)

- **Integrated Clinical Management: Complex Health Alterations** (4)
- Leadership for Professional Nursing (3)
- **Psychiatric Mental Health** (3)
- **The Research Process and its Application to Evidence-Based Practice** (3)

Fourth Semester (15 credits)

- **Nursing the Childbearing Family** (4)
- **Child Health** (4)
- **Population and Public Health Nursing** (4)
- **Philosophical, Theoretical and Ethical Perspectives of Advanced Nursing Practice** (3)

Fifth Semester (12 credits)

- **Context of Health Care for Advanced Nursing Practice** (3)
- **Integrated Clinical Management: Synthesis Practicum** (6)
- Nursing Specialty Elective(s) (at least 3 credits)

Possible Elective Offerings

- **DNP Program – Health Information Technology** (2)
- Dying and Death
- Breastfeeding: Practice and Research
- Specialty Nursing: Introduction to Emergency Nursing
- Specialty Nursing: Preparing for Global Nursing
- Digital Technologies, Artificial Intelligence, and Machine Learning in the Era of Big Data

Bold: Clinical Courses

Spirit Blue: Graduate Core or Advanced Practice Core (14-16)

* This course is offered in 3rd semester for Spring cohorts.



Admissions Criteria

Completing the program application doesn't have to be hard and shouldn't be overwhelming. The application process is a chance for the Admissions Committee to get to know you as an individual, student and potential healthcare advocate. Let's break it down!

1. Bachelor's Degree
2. Submission of all Transcripts
3. Statement of Purpose
4. Video Interview
5. Resume or CV
6. Letters of Recommendation

Prerequisite Courses

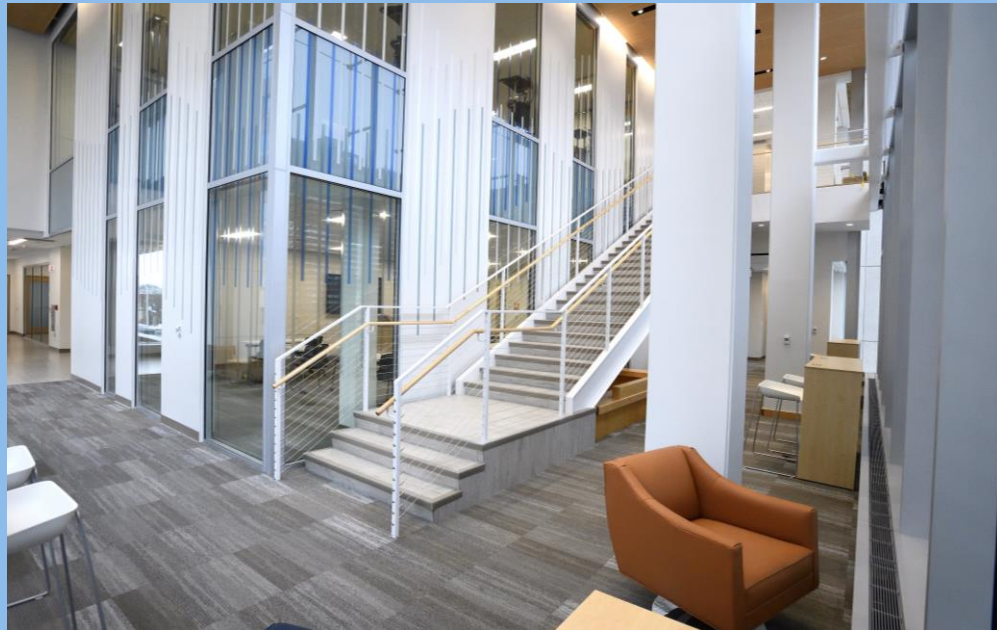
Course Requirements:

- Anatomy with Lab
- Physiology with Lab
- Microbiology with Lab
- Nutrition
- Human Growth and Development Through the Lifespan
- Statistics (not a business focus)

All prerequisites require a grade of B- or better

JHSON offers all prerequisite courses online!





Excellence Cornered

Johns Hopkins Hospital ranked in top four US hospitals for 24 years in US News & World Report

Top Schools of Nursing, Medicine and Public Health all on one campus



Careers in Nursing

RN Salary and Job Growth

<https://www.allnursingschools.com/registered-nursing/salary/>

Nursing Career Specialties

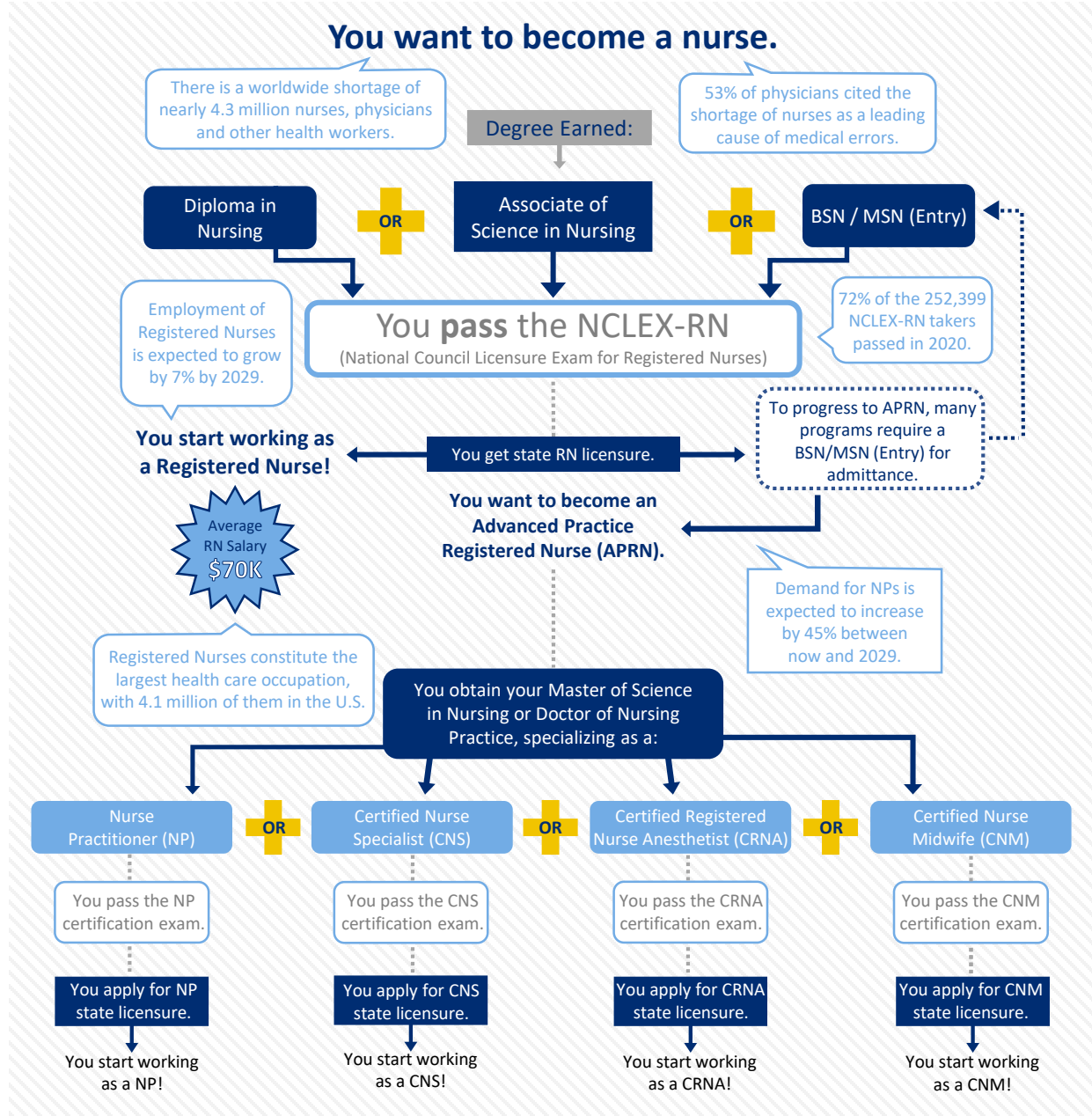
<https://www.allnursingschools.com/articles/careers/>

Nursing Career Facts

<https://www.americannursetoday.com/facts-nursing-career/>

Facts About Nursing Careers and Pay

<https://www.verywellhealth.com/facts-about-nursing-careers-and-pay-1736255>



Becoming a Hopkins Nurse



Complete your online application at NursingCAS.org.

Let's Stay Connected



JOHNS HOPKINS
SCHOOL *of* NURSING

www.nursing.jhu.edu

bleblan2@jhu.edu

410.955.7548